



Winter Hill in Motion: Central Broadway Redesign Project

2/4/19 – Community Meeting Presentation



Introduction



- The City has invested in a number of projects along or adjacent to Broadway between Ball Square and Sullivan Square
 - **Magoun Square Streetscape** – Completed 2010
 - **East Broadway Streetscape** – Completed 2015
 - **Route 28/Route 38/Interstate 93 Planning Study** – Underway
 - **Broadway at Trum Field Improvements (HSIP)** – 2019 Implementation
 - **Temple St Improvements (HSIP)** – 2019 Implementation
- There is a clear gap between Magoun Square and McGrath Highway, which has become the focus of **Winter Hill in Motion**



Introduction

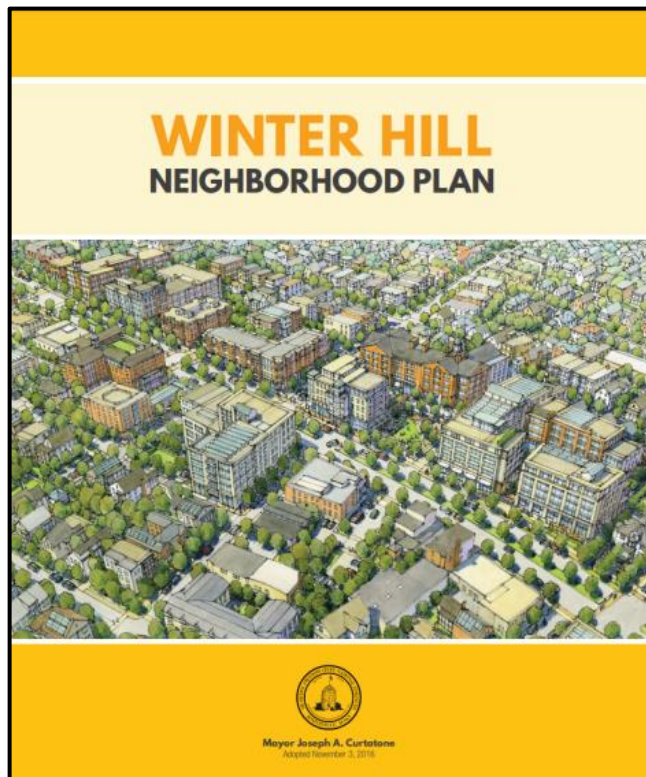


- The City has invested in a number of projects along or adjacent to Broadway between Ball Square and Sullivan Square
 - **Magoun Square Streetscape** – Completed 2010
 - **East Broadway Streetscape** – Completed 2015
 - **Route 28/Route 38/Interstate 93 Planning Study** – Underway
 - **Broadway at Trum Field Improvements (HSIP)** – 2019 Implementation
 - **Temple St Improvements (HSIP)** – 2019 Implementation
- There is a clear gap between Magoun Square and McGrath Highway, which has become the focus of **Winter Hill in Motion**





Why the Urgency?





Why the Urgency?

The Boston Globe

NOVEMBER 10, 2017

STARTS & STOPS

T's declining ridership: Why and where



JOHN BLANDING/GLOBE STAFF

By Adam Vaccaro | GLOBE STAFF NOVEMBER 10, 2017



somervillema.gov/winterhillmotion

Municipal Role in Supporting Transit



The Boston Globe

DECEMBER 05, 2017

STARTS & STOPS

These four Boston suburbs will try to improve local bus service



An MBTA bus drove on a dedicated lane converted from parking spaces on one side of Broadway in Everett during a one-week trial in December 2016.

By [Adam Vaccaro](#) | GLOBE STAFF DECEMBER 05, 2017





Municipal Role in Supporting Transit



Municipal Role in Supporting Transit



BostonBRT @bosBRT · 27 Dec 2017

Did you know? The @MBTA's week-long #dedicatedlanes test along Prospect St in Somerville cut travel times by avg of 10min on the C2 & 6min for all other bus routes using the street.



T notes: Bus lanes do save time - Commonwealth Magazine

Tracking Transportation Tracking Transportation Keeping track of transportation Buses, not gondolas, are the answer By Ari OfsevitSee all ...

commonwealthmagazine.org



Municipal Role in Supporting Transit



[Redacted Name]

@finitealright

Follow



Holland St needs one of these from Davis to Teele for the packed evening rush hour 87 and 88 buses in @SomervilleCity @JoeCurtatone. I think we should do a pilot too! ✨🚲🚌✨



Cambridge in Motion @CambMotion

During it's first week of operation, the priority bus lane on Prospect St in @SomervilleCity has shaved off an average of 6 minutes per outbound trip! #CambMA #MBTA bit.ly/2IIFyo

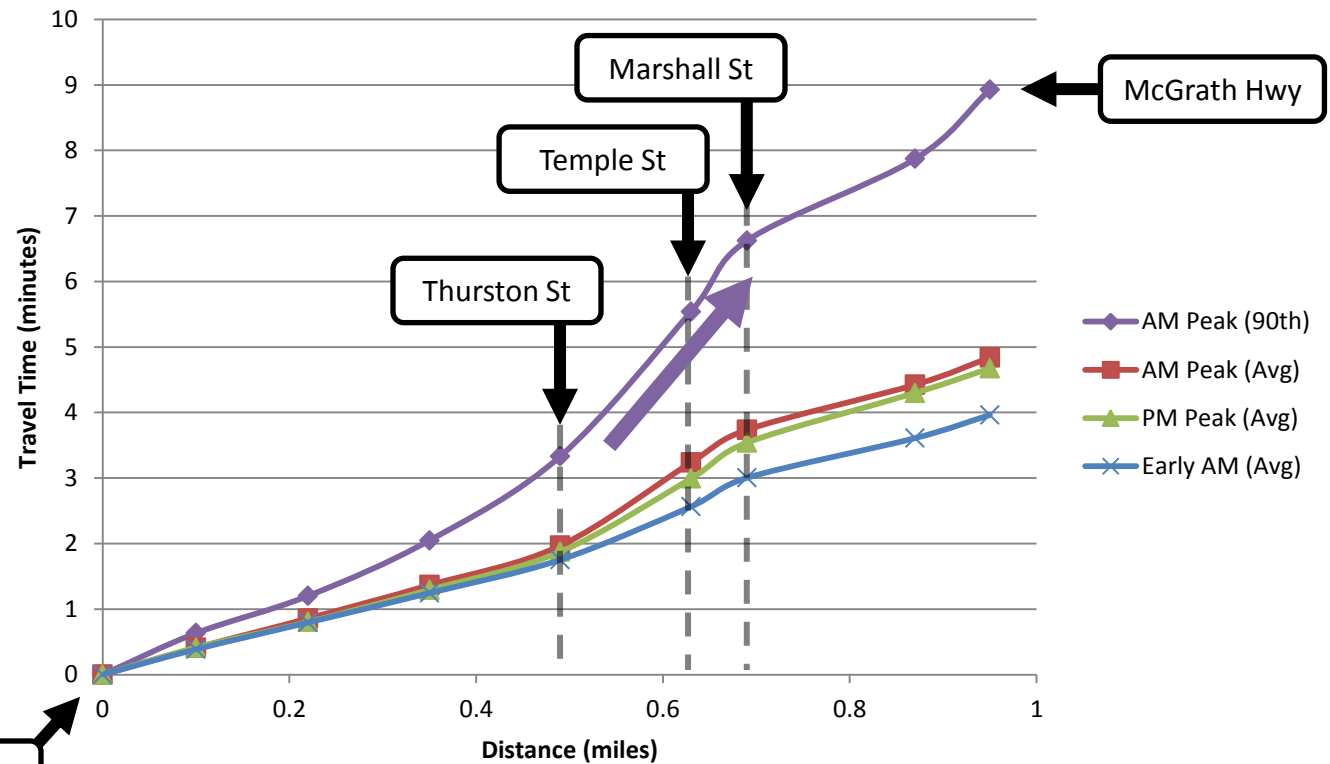
6:07 AM - 3 Jan 2018



What Characterizes Broadway Today?



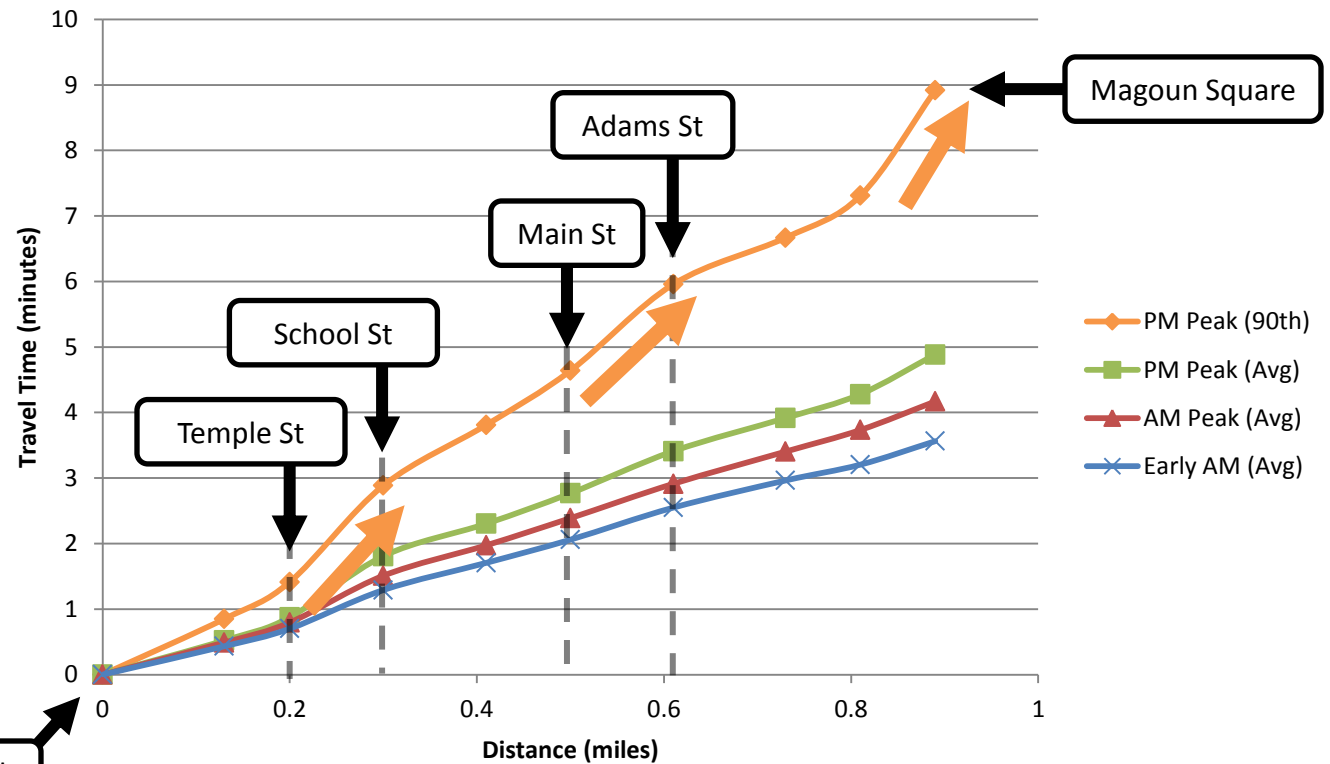
Bus Travel Time Broadway Eastbound Magoun Square to McGrath Highway



What Characterizes Broadway Today?



Bus Travel Time Broadway Westbound Foss Park to Magoun Square



What Characterizes Broadway Today?



In March 2018, the City sent out a survey that asked for current experiences and impressions of Broadway. The link was open for a month and over 1,000 responses were received.

What are the top three transportation related issues with Broadway?

And the survey says...

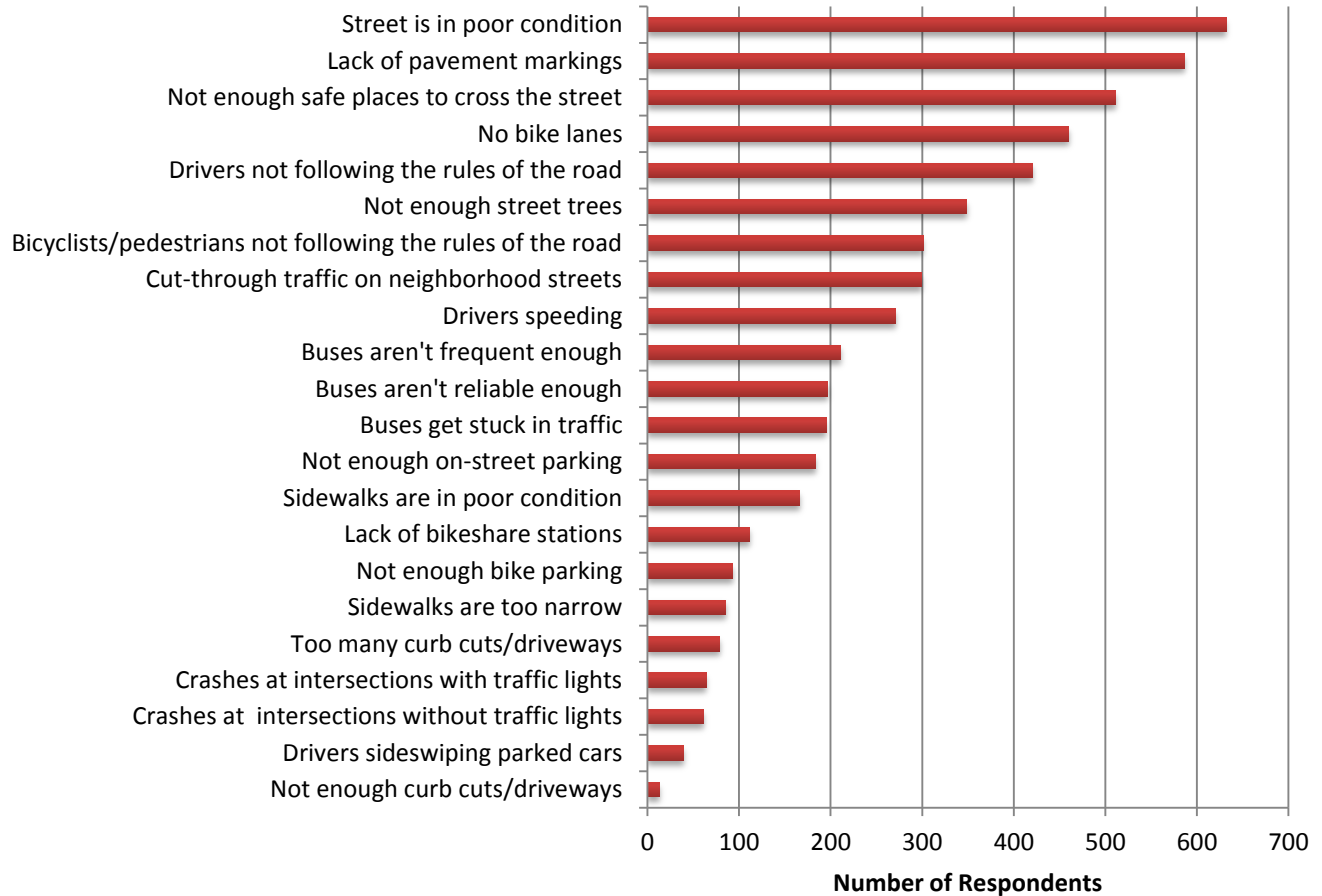




In March 2018, the City sent out a survey that asked for current experiences and impressions of Broadway. The link was open for a month and over 1,000 responses were received.

What Characterizes Broadway Today?

What are your Top Three Transportation Related Issues with Broadway?



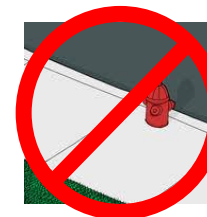


What is the Scope of this Project?

What's not included:



New pavement



**New sidewalks
(except at 3 bus stops)**

What is included in Winter Hill in Motion:



**New pavement
markings and signs**



**Signal Timing
Changes**



**Bus stop consolidation
(through a separate
MBTA project)**





What is the Scope of this Project?

MBTA Bus Stop Accessibility Improvements

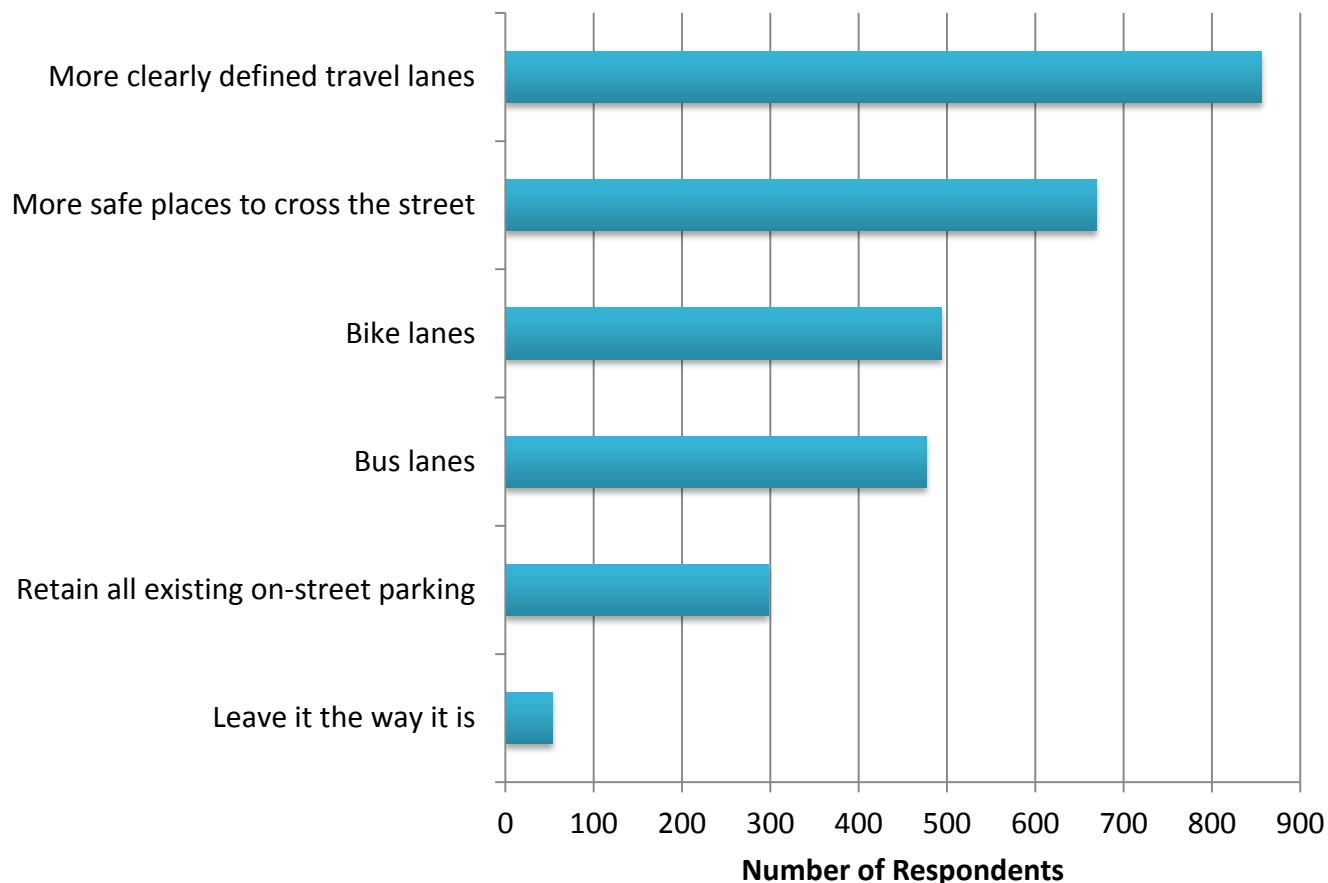




Design Preview: Survey Results

In March 2018, the City sent out a survey that asked for current experiences and impressions of Broadway. The link was open for a month and over 1,000 responses were received.

What Would You Like to See in a New Design of Central Broadway?





Design Preview: Bike Facilities





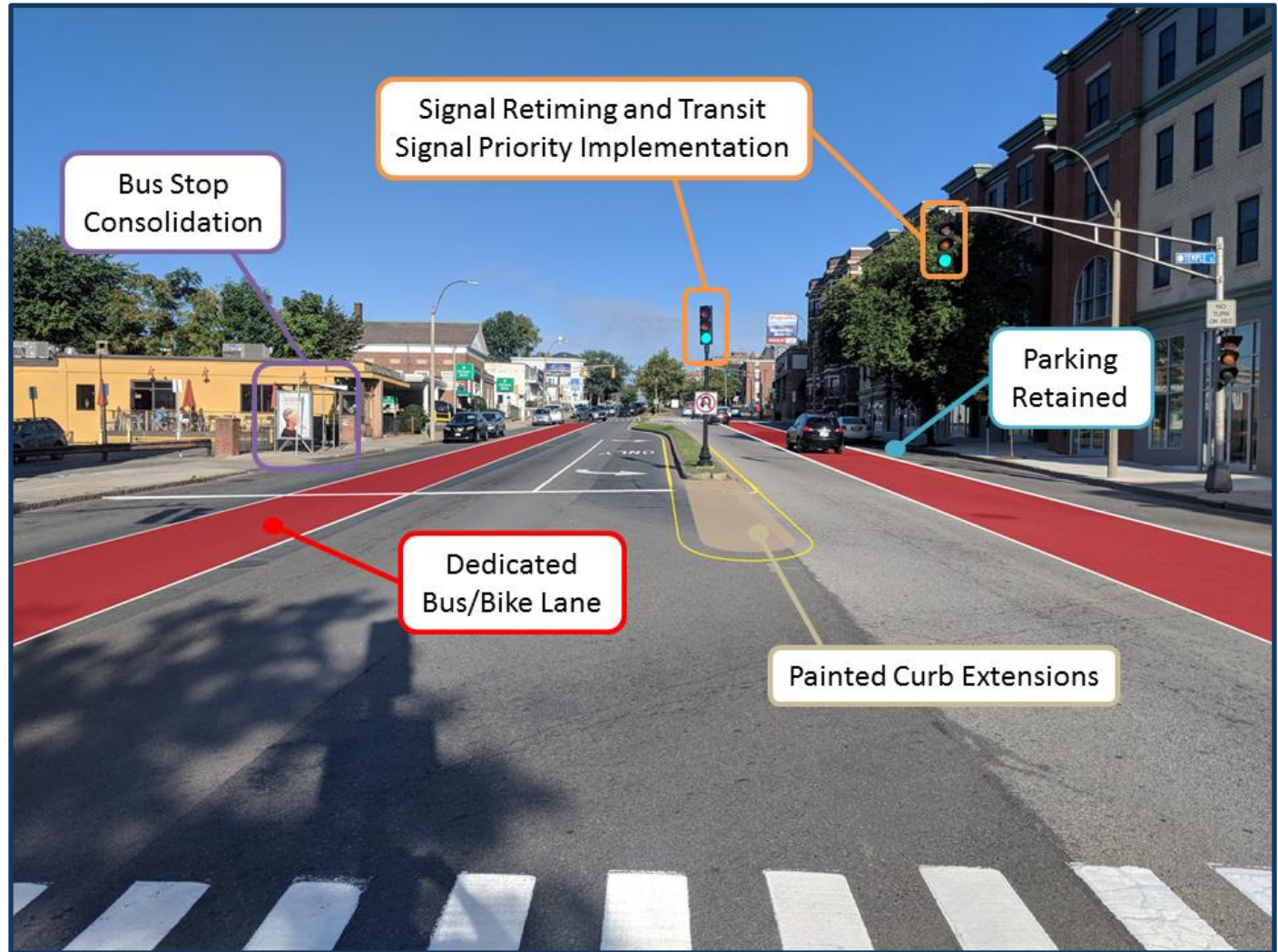
Design Preview: Bike Facilities



Washington Street, Union Square



Design Preview: Bus Facilities



Design Preview: Parking Changes



Winter Hill in Motion: Broadway Existing Curb Use Map





Design Preview: Parking Changes

Weekday Parking Counts on Broadway

	Total # of Spaces		8:00 AM	12:00 PM	5:00 PM	10:00 PM
2 Hour or Residential Permit	123	Spaces Being Used	73	81	83	109
		% Full	59%	66%	67%	89%
Metered	39	Spaces Being Used	14	22	22	17
		% Full	36%	56%	56%	44%
Other	21	Spaces Being Used	4	12	10	6
		% Full	19%	57%	48%	29%



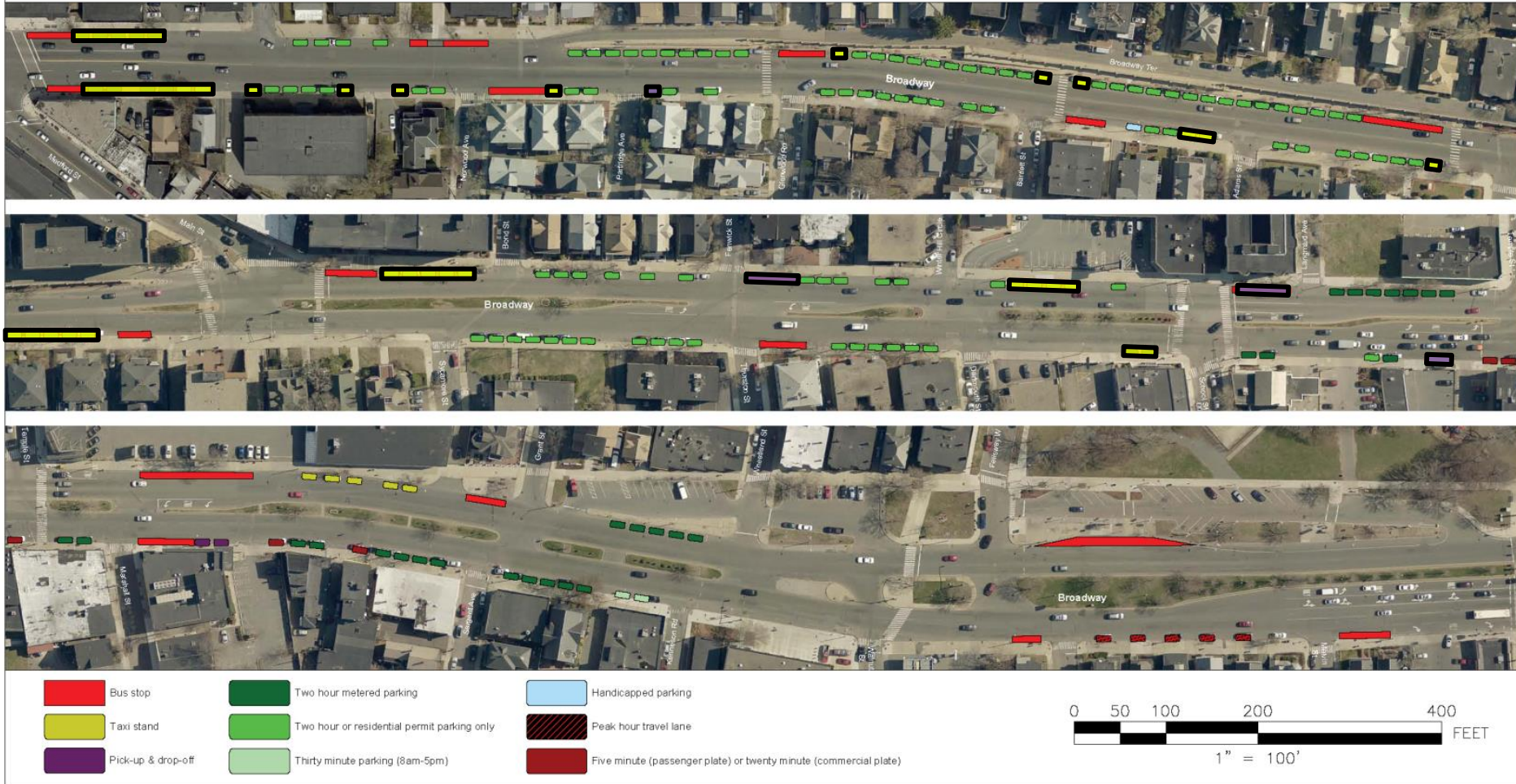
Design Preview: Parking Changes



Winter Hill in Motion: Broadway Existing Curb Use Map

Expected Removal to Accommodate New Design

Expected New Parking as Part of Final Design



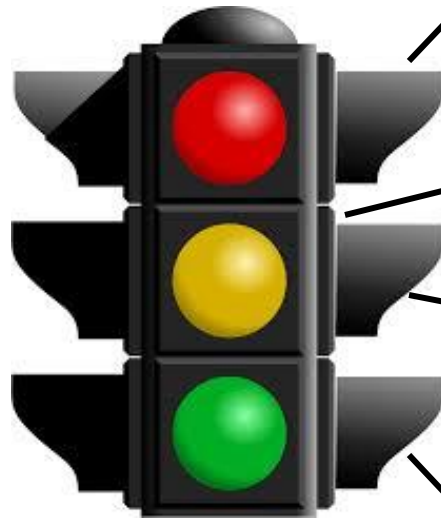
Design Preview: Signal Timing Changes

Retime signals to better meet current demand

Coordinate signals so that buses and drivers on Broadway can get a green light from Main St to Temple St and vice versa

Move to concurrent pedestrian phasing where practical, which improves compliance and decreases waiting time for all modes

Install transit signal priority equipment that will detect buses and extend the green time on Broadway to allow them to get through intersections faster





Next Steps

- **Construction plans for pavement markings, signage, and signal timing will be finalized in March**
- **Implementation anticipated to begin in April**
 - **Bus stop removal** – Prior to affected stops getting removed from service, customers will be notified by the MBTA via service advisory signs
 - **Parking removal** – Keep an eye out for new signs. Warning tickets will be issued when changes first occur.
 - **Pavement markings** – Will likely take between 2 and 4 weeks to remove old markings and put down new markings. Work will be done between the hours of 8pm and 4am. Will require some overnight parking bans and traffic detours.
 - **Signal retiming** – A few days worth of work, may require short periods of signal outages (police details will be present to direct traffic)
 - Sign up for email updates or check out the Winter Hill in Motion web page to get the latest info





Winter Hill in Motion: Central Broadway Redesign Project

2/4/19 – Community Meeting Presentation