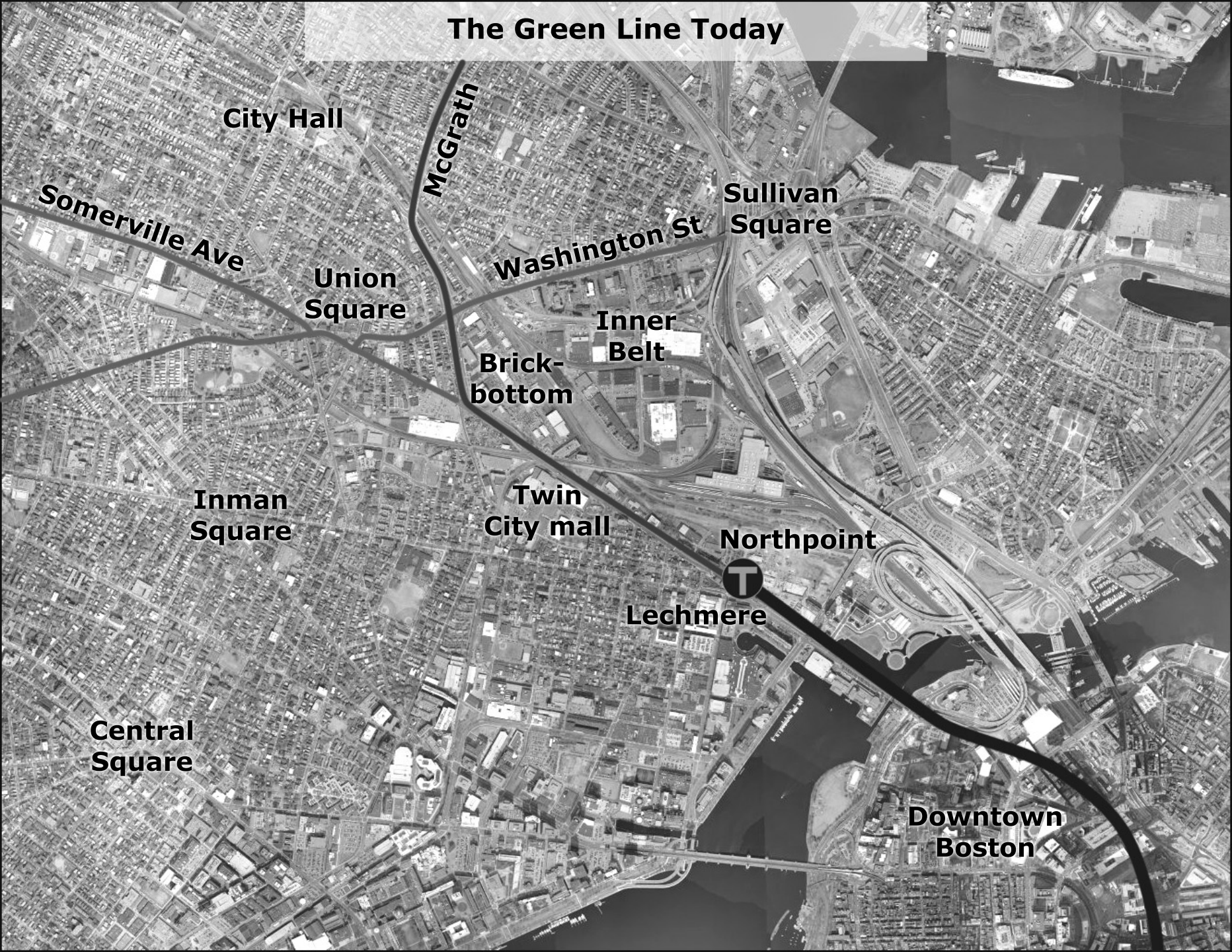


The Green Line Today



City Hall

Somerville Ave

Union Square

McGrath

Washington St

Sullivan Square

Inner Belt

Brick-bottom

Twin City mall

Inman Square

Northpoint

Lechmere

Central Square

Downtown Boston

Green Line Extension: Two Spurs



T
City Hall

Somerville Ave

T
Union Square

McGrath

T

Washington St

Sullivan Square

Inner Belt

Brick-bottom

T

Twin City mall

Inman Square

Northpoint

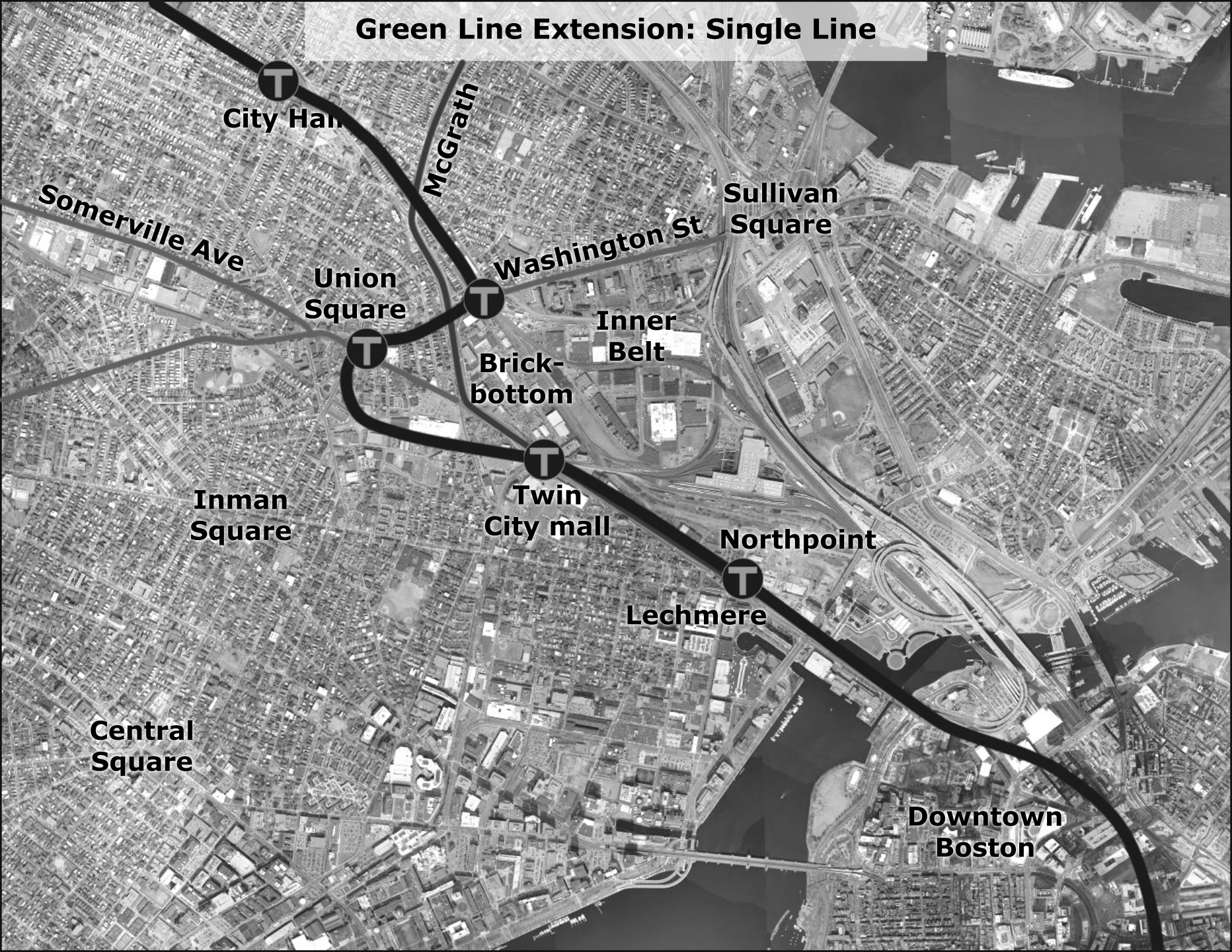
T

Lechmere

Central Square

Downtown Boston

Green Line Extension: Single Line



City Hall

McGrath

Somerville Ave

Union Square



Washington St

Sullivan Square

Inner Belt

Brick-bottom



Inman Square

Twin City mall

Northpoint



Lechmere

Central Square

Downtown Boston

Union Square Alternative 1a

Surface trolley or cut-and-cover tunnel
up Somerville Ave, station near Prospect St



50 yards

Union Square Alternative 1b

Surface trolley or tunnel up Somerville Ave,
underground station in heart of square



Washington St

Somerville Ave

Fitchburg commuter rail line

50 yards

Union Square Alternative 2a

Along Fitchburg line to
station near Prospect St



50 yards

Union Square Alternative 2b

Along Fitchburg line, curve to station
near Prospect St & Somerville Ave



Bow St

Webster Ave

Prospect St

Fitchburg commuter rail line

Allen St

Washington St

Somerville Ave

50 yards

Union Square Alternative 2c

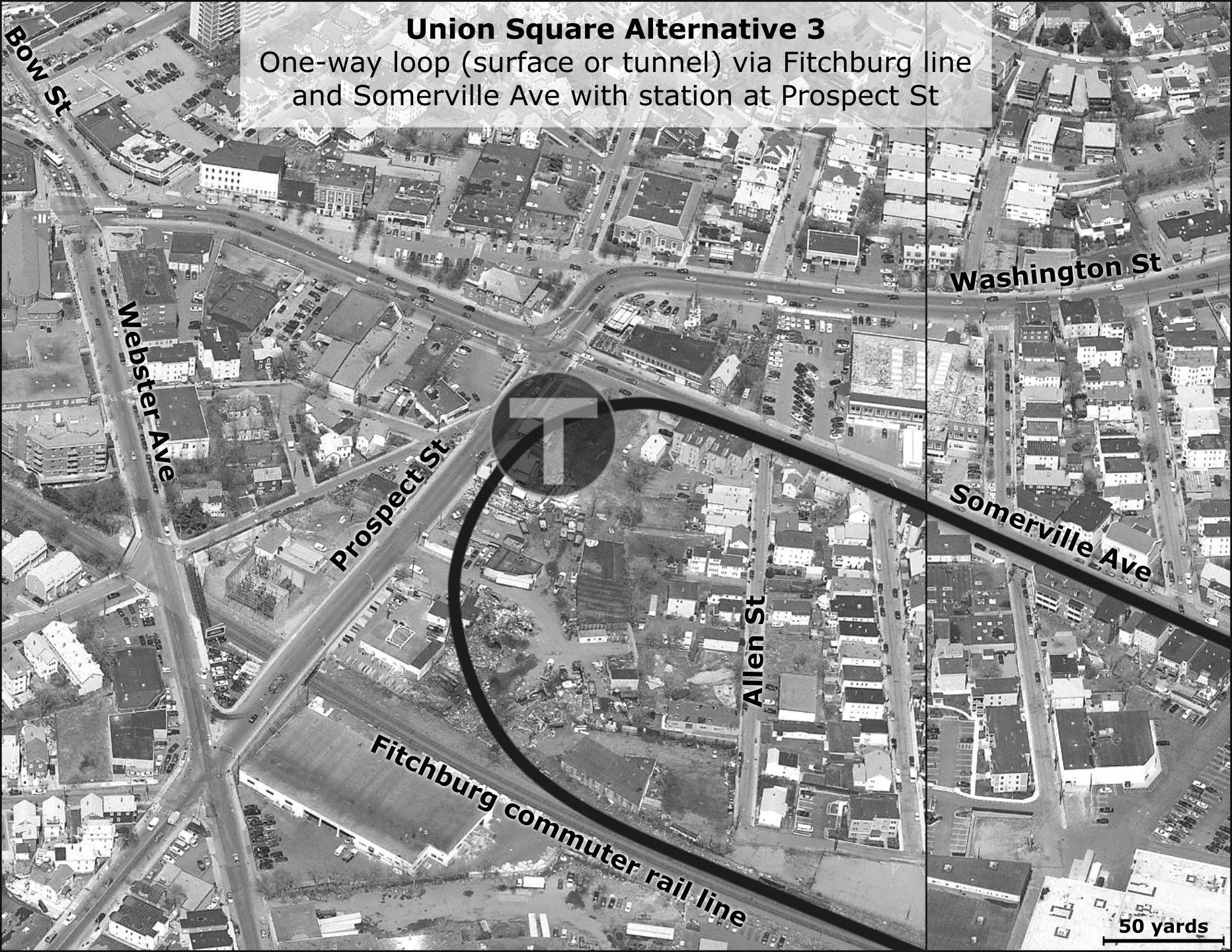
Along Fitchburg line, tunnel under Webster Ave
to underground station in heart of square



50 yards

Union Square Alternative 3

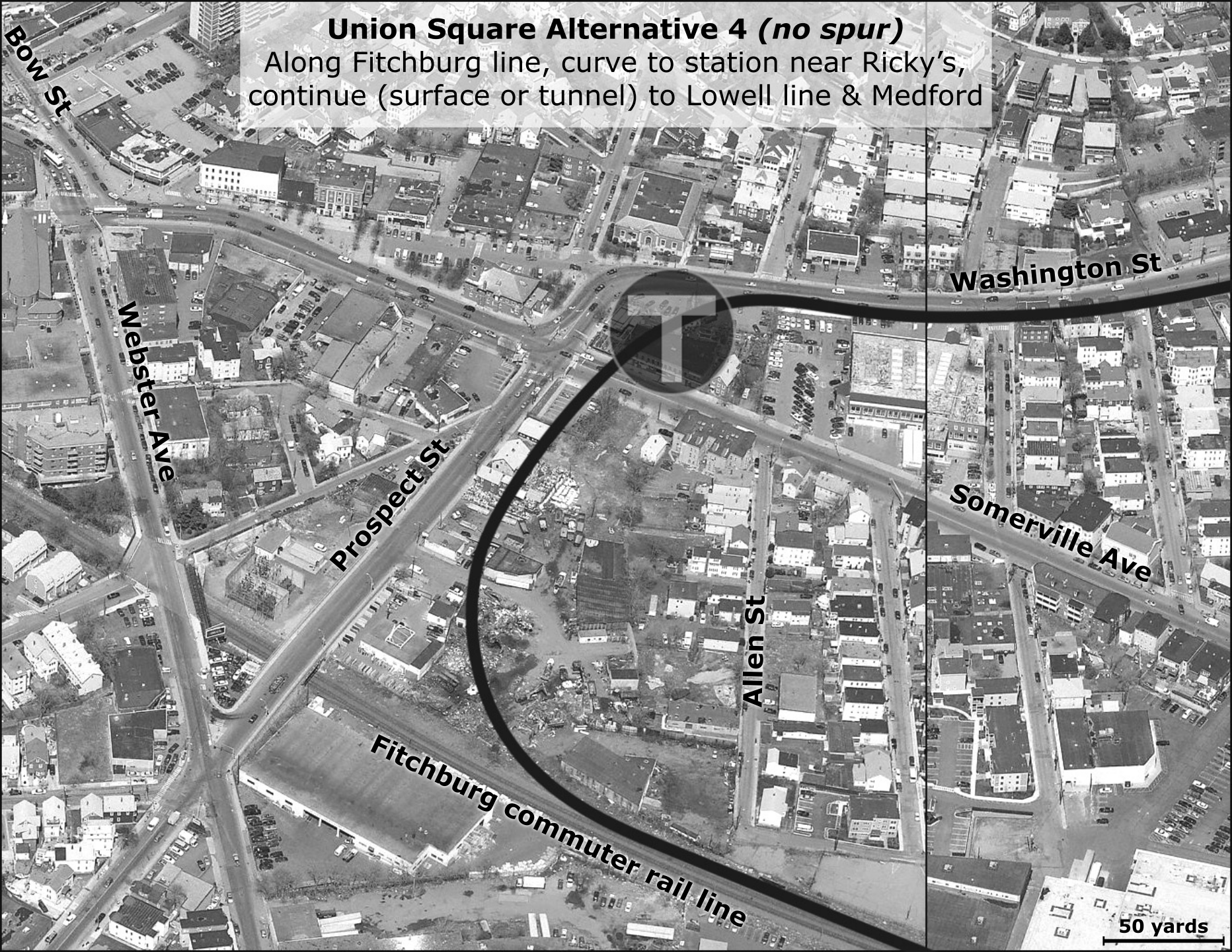
One-way loop (surface or tunnel) via Fitchburg line
and Somerville Ave with station at Prospect St



50 yards

Union Square Alternative 4 (*no spur*)

Along Fitchburg line, curve to station near Ricky's,
continue (surface or tunnel) to Lowell line & Medford



50 yards